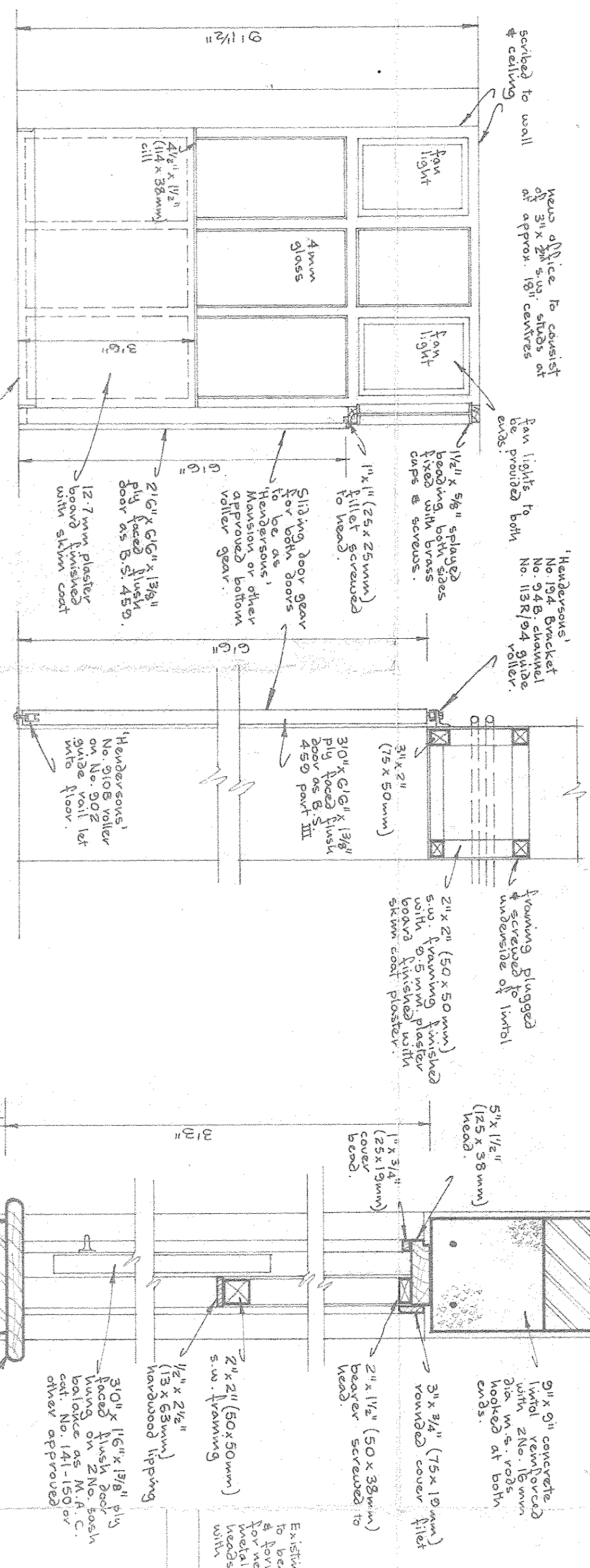
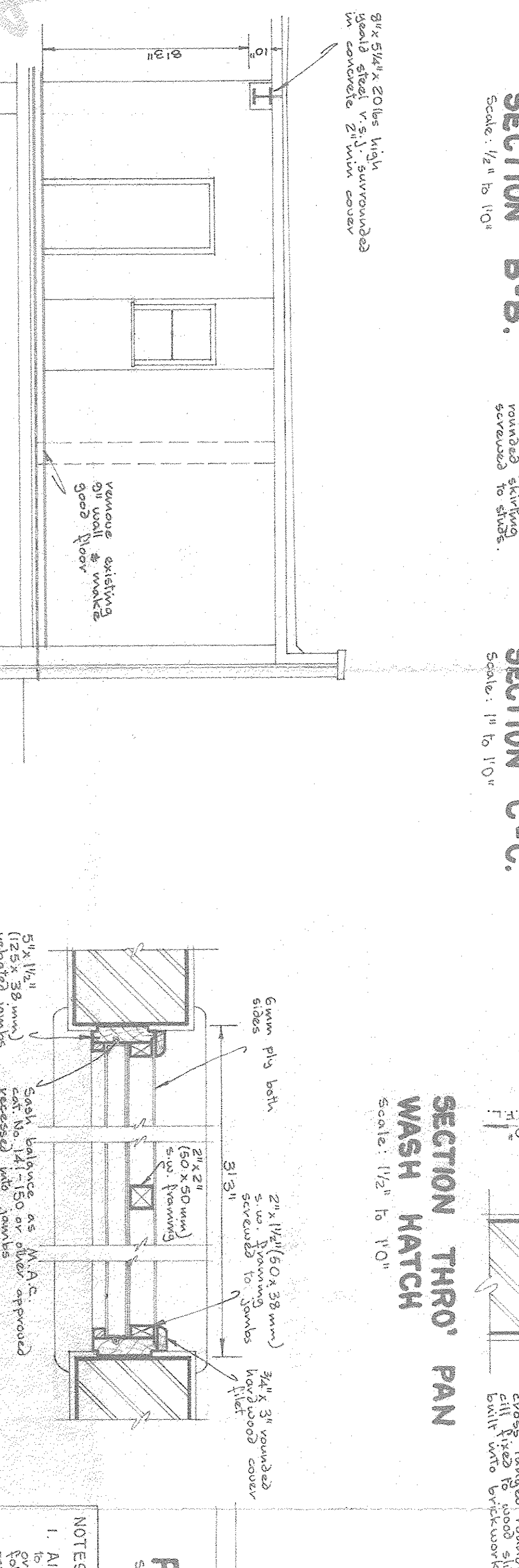


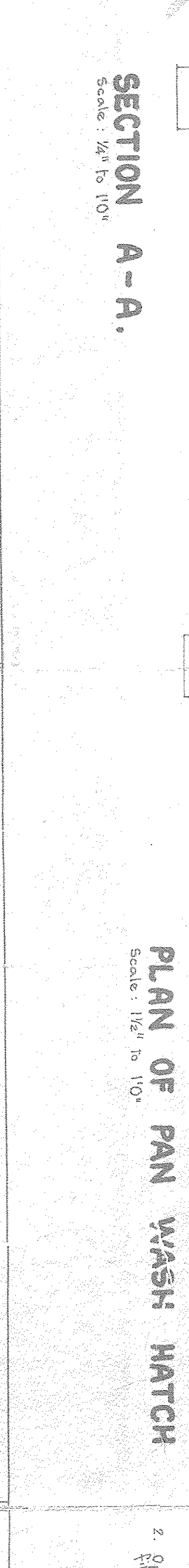
TYPICAL SECTION THRO' NEW WINDOWS
Scale: 1/4" to 10"



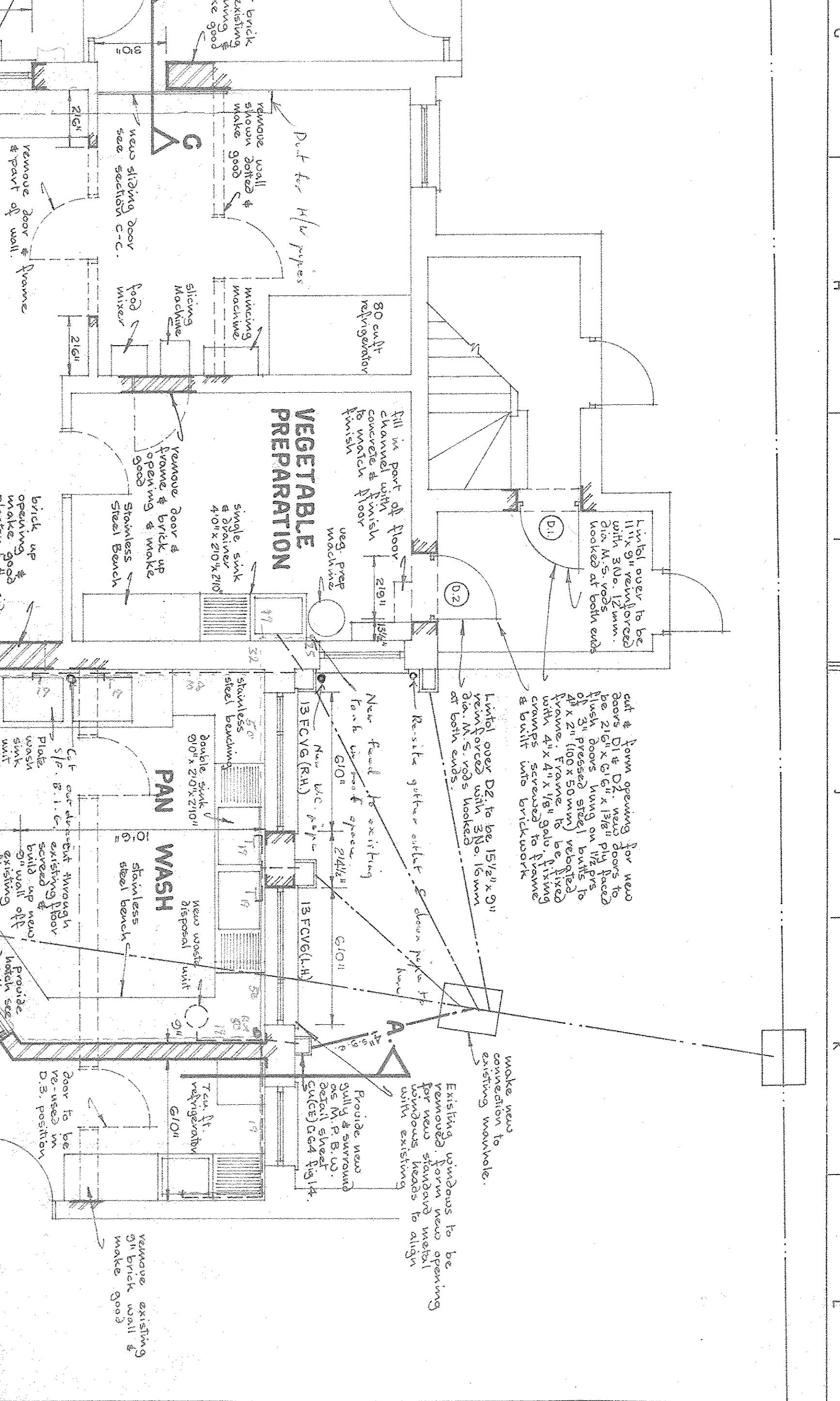
SECTION B-B.
Scale: 1/2" to 10"



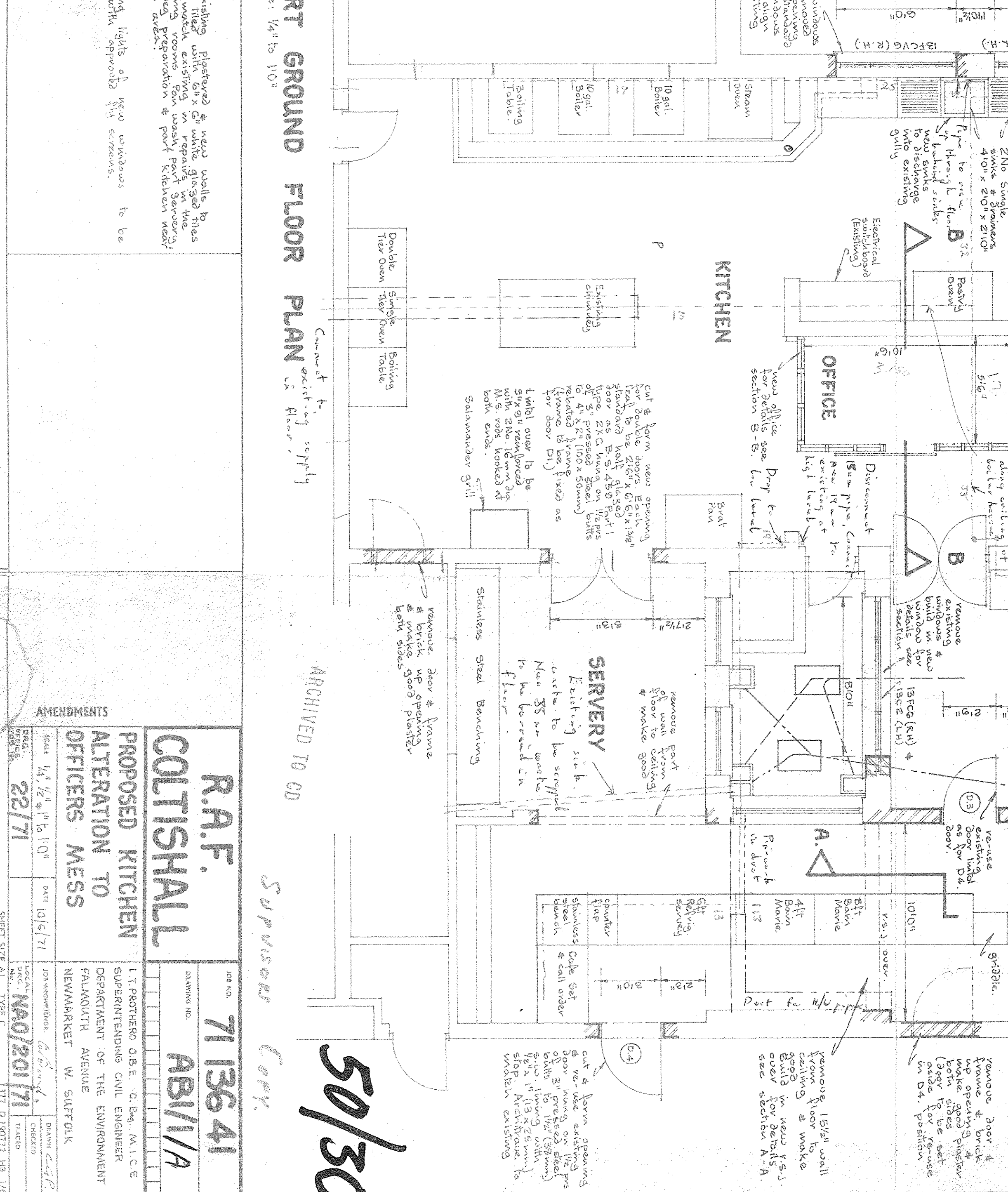
SECTION C-C.
Scale: 1/2" to 10"



SECTION A-A.
Scale: 1/4" to 10"



PLAN OF PAN WASH HATCH
Scale: 1/2" to 10"



PART GROUND FLOOR PLAN
Scale: 1/4" to 10"

- NOTES.**
- All existing plastered & new walls to be fitted with 6"x6" white glazed tiles to match existing in repairs in the Pan Wash, Vegetable Preparation & Mens Changing Room & Female Changing Room & Toilets.
 - Opening lights of new windows to be fitted with approved fly screens.

AMENDMENTS

NO.	DATE	BY	DESCRIPTION
1	22/71	W. S. J.	As per drawing

R.A.F. COLTISHALL
PROPOSED KITCHEN ALTERATION TO OFFICERS MESS

7113641
ABI/1/A

L. J. PROBERT O.B.E., C. Eng., M.I.C.E.
SUPERINTENDING CIVIL ENGINEER
DEPARTMENT OF THE ENVIRONMENT
PALMOUTH AVENUE
NEWMARKET W. SUFFOLK

DRYING NO. 7113641
DRAWN BY W. S. J.
CHECKED BY W. S. J.
DATE 22/71

377 D190712 HB 1/66

50/30
Suppliers Copy