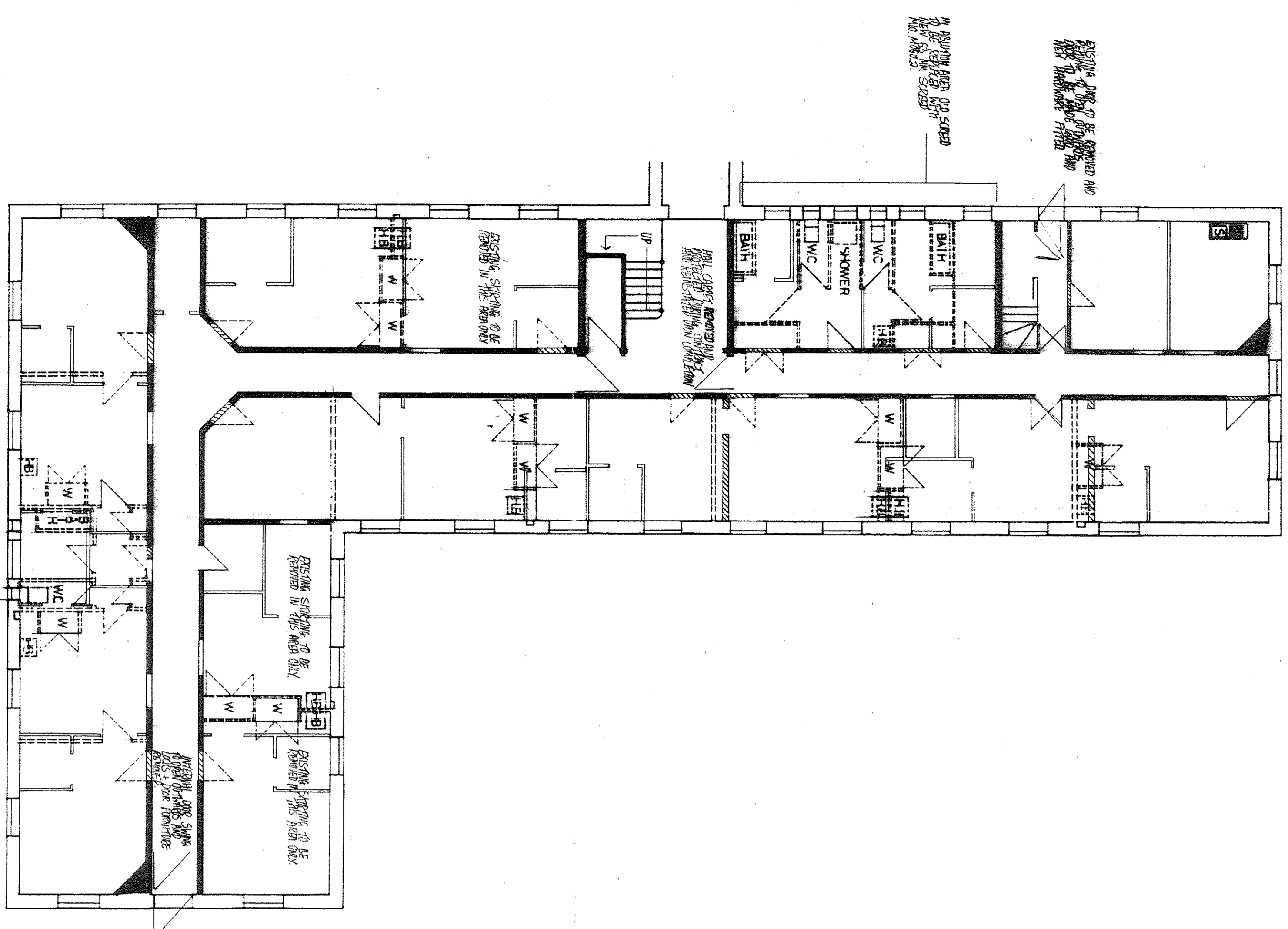
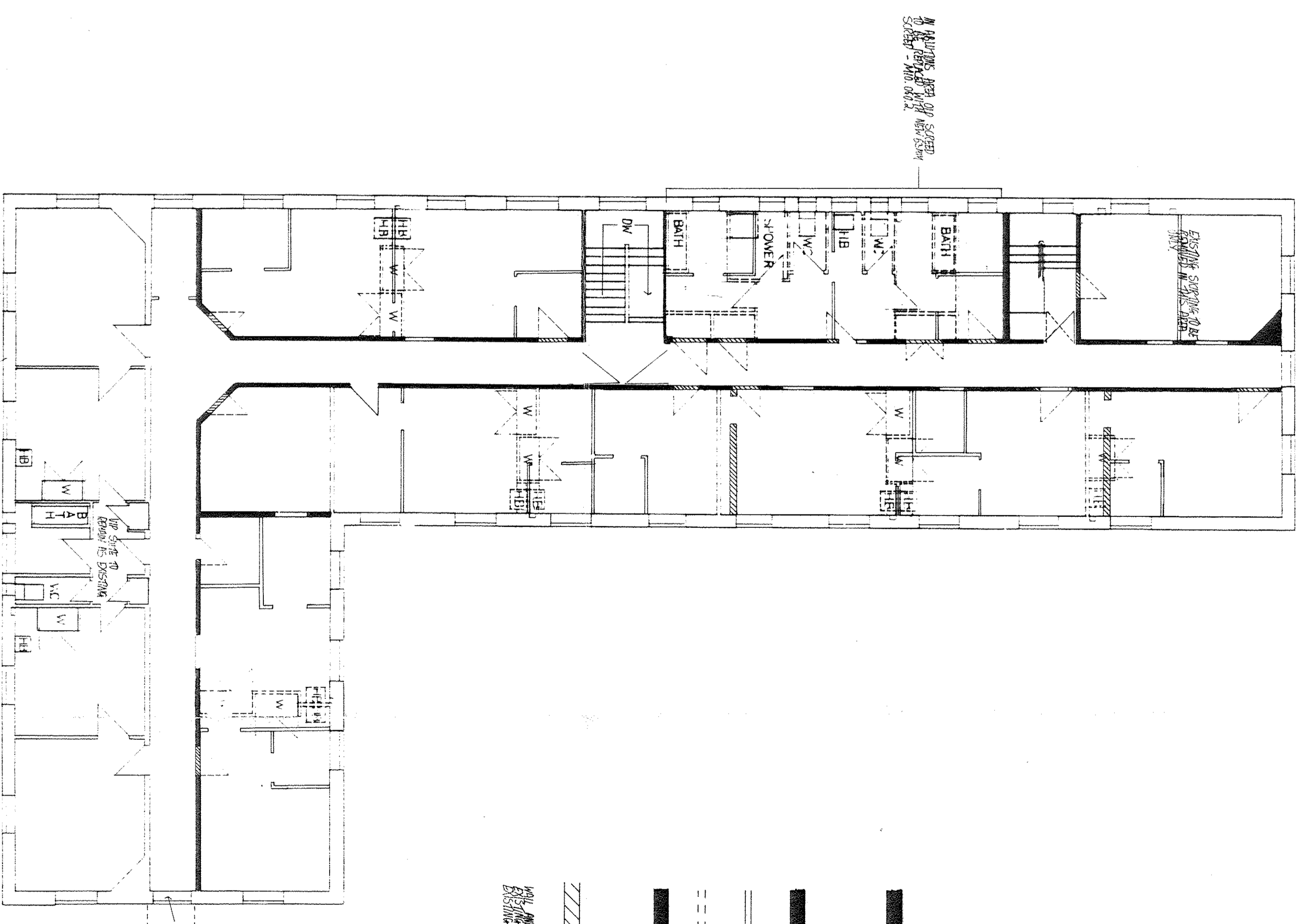


5610



GROUND FLOOR



FIRST FLOOR

KEY-

- S - SINK
- CS - CLEANERS SINK
- HB - HAND BASIN
- W - WARDROBE

ALL TO BE REMOVED EXCEPT IN VIP SUITE

EXISTING INTERNAL WALL - EXISTING DOOR REMOVED AND OPENING BOUNDED UP

EXISTING INTERNAL WALL - FROM NEW OPENING WITH NEW LEVEL AND INSERT NEW DOOR

NEW DOWN SUSPENDED PARTICION - FROM ORNAMENT LEVEL UP INSERT DOORSET

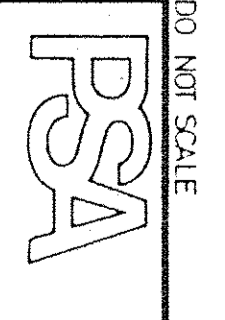
EXISTING INTERNAL PARTITION - TO BE REMOVED

EXISTING INTERNAL WALL WITH DOORWAY TO BE REMOVED AND NEW DOORWAY TO BE BOUND UP IN NEW SUITE

NEW 25mm BOUNDARY PARTITION - FROM ORNAMENT WITH NEW LEVEL AND INSERT NEW DOORSET

NEW AND FLOOR FINISHES TO BE WARE AND WHERE EXISTING WALLS ARE REMOVED EXISTING FLOOR FINISHES TO BE REMOVED FROM ALL WALLS EXCEPT IN SERVICES

WINDOW ANNOTATED TO BE REMOVED AND NEW WINDOW TO BE FITTED IN PLACE



DO NOT SCALE

Site
RAF COLTISHALL
OFFICERS MESS EAST
WING REFURBISHMENT

Element / Workstation
DEMOLITIONS

Scales
 1:100

Office of Origin
 KAVHILLOR RIBA
 PSA
 P.S.A. E. Moor Road,
 Block D, Brouthams,
 Cambridge CB2 2DZ

Officer Responsible & Appointment
 ST WILSON BUILDING SURVEYOR

Drawn
 HJD
 Date

Checked
 Date

Approved
 Date

Project No. **4W/910134**

Drawing No. **GMN-5/91/AM/1**

Revision	Date

ARCHIVED TO CD